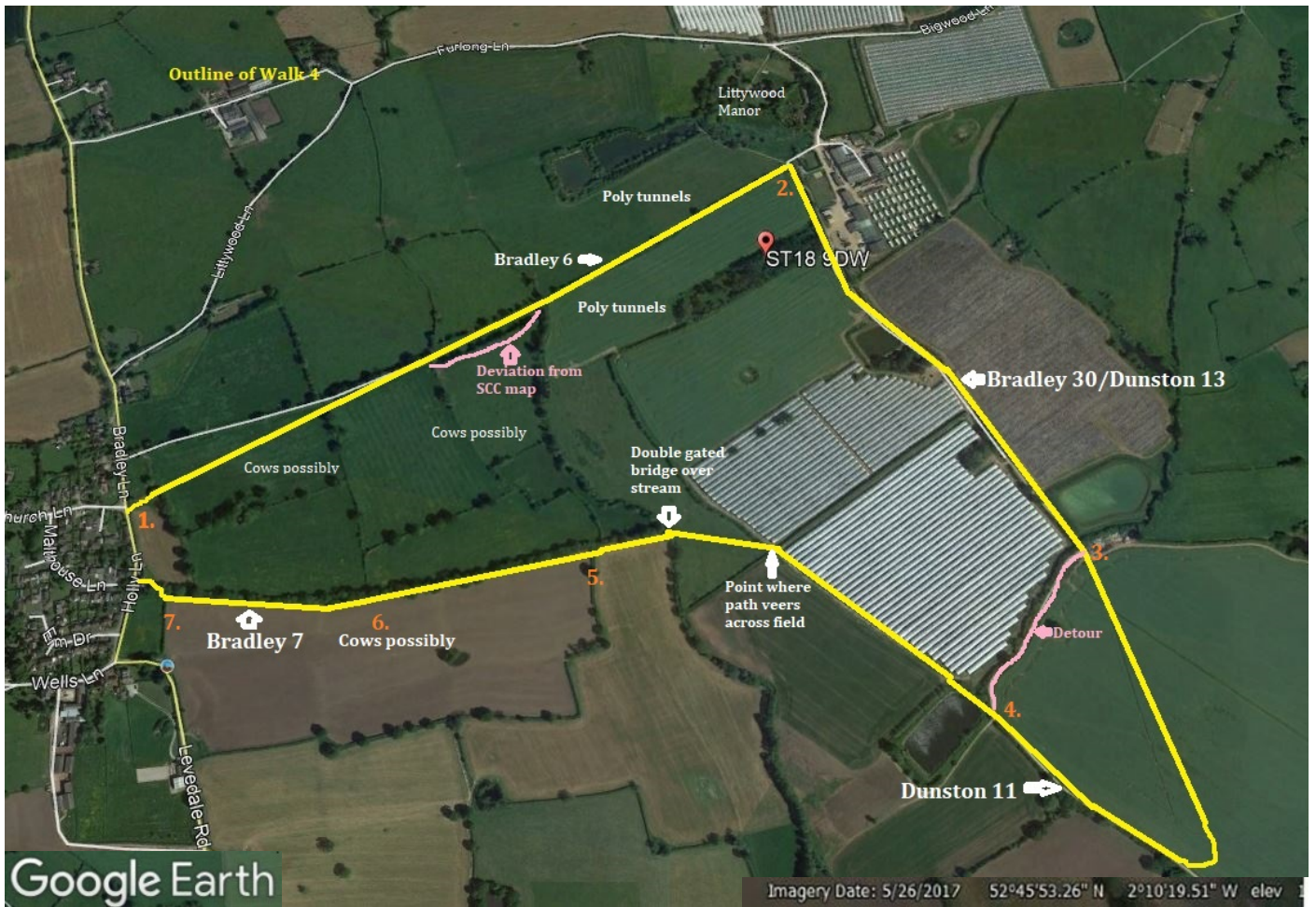


Walk 4

1. Staffs County Council map of area relating to this walk.



2. The relevant Google Earth image on which is superimposed the outline of this walk.



This walk is approximately $2^{1/2}$ miles long and takes roughly an hour. It is on the flat, and, apart from a few places (which are pointed out), is fairly good underfoot.

This walk begins by incorporating the first part of walk 3 as it follows the route along Bradley 6. Photograph no.1 (below, taken on or about 18/08/20) illustrates the weed choked field encountered after passing through the kissing gate in Bradley Lane.



1.

As may be seen from this photograph, the field beyond is choked with weeds which makes walking difficult. Problems further arise due to the very uneven nature of the ground beneath this undergrowth.

On exiting this first field walking becomes much easier as Bradley 6 enters upon a series of fields which are grassed over. However, as indicated on the Google Earth map above, these fields do sometimes contain cattle, and there are no barriers in place between these animals and the footpath.

Note: The Staffs County Council map fails to give an up to date image of these particular fields. There appears to be three fields, but in fact, there are only two, the hedge between the second and third having been taken out. Also, there is a further discrepancy: the depiction of a part of Bradley 6 passing between two parallel hedges is misleading as this part of the path lies to the right of these two hedges, as shown by the deviation marked in pink on the Google Earth map.

Keeping the hedge to the left Bradley 6 comes to a stream (indicated on the Google Earth image) over which there is a small bridge at each end of which lies a stile.

After passing over this small bridge with its two stiles Bradley 6 passes between multiple polytunnels (the positions of which are marked on the Google Earth image).

Deviation from Walk 3 occurs at the intersection of Bradley 6 and the path which comprises of Bradley 0.1236 (for Walk 3) in one direction and Bradley 30/Dunston 13 in the other. Here, Walk 4 follows a right turn to enter Bradley 30, as seen in photograph no.2 below:

2.



Walk 4 follows Bradley 30, polytunnels lying to the right, until it reaches the point which marks the position of photograph no.3 on the maps. At this point the path (by now Bradley 30 has run into Dunston 13) should cross a field. However, the position of the path is obscured by a crop of oil seed rape. See photograph no.3 (below, taken on or about 20/04/20) :

3.



As seen by the above photograph it is necessary to follow the track round to the right rather than try to follow the true line of Bradley 30/Dunston 13. This detour (which may technically be trespassing) is marked in pink on the Google Earth map.

This detour joins up with the official path (Bradley 7/Dunston 11) at the point where photograph no. 4 (below, taken on or about 20/04/20) is marked on the maps:

4.



As may be seen from the above photograph no.4, the gate which leads on to Dunston 11 was partially obscured by undergrowth. After passing through this gate this walk the path continues in a straight line, firstly, with a pond to the left and, and after a few yards, polytunnels to the right of it.

The path then veers off diagonally to the left across a field (see comment marked on the Google Earth image). It then exits this first field via a double gated bridge which crosses a stream (see comment marked on Google Earth image ¹). It then proceeds along the side of a second field keeping the hedge to the right. Exit from this field is via another double gate which has no signage. See photograph no.5 (below, taken on or about 20/04/20):

¹ Bradley 7 is currently closed due to this bridge being broken. It is due to reopen March 2021.

5.



This path (which has by now become Bradley 7) then enters a large open field which in April was ploughed over. Photograph no.6 (below, taken on or about 20/04/20) shows this field. Although it was easy walking on the ploughed portion, the position of the “isolated” gate, shown in this photograph (which lay part way through the field) shows the true position of Bradley 7, which is overgrown.

6.



By November some of the land along Bradley 7 contained cattle. However, they were contained within an electric fence, and there was adequate room left between the fence and hedge for walking.

Bradley 7 continues along the side of the fields until it reaches a gate with no signage (see photograph no.7 below). This gate opens on to a path which leads to Holly Lane.



A right turn takes the walker back to the starting point of this walk, namely, the kissing gate in Bradley Lane.

