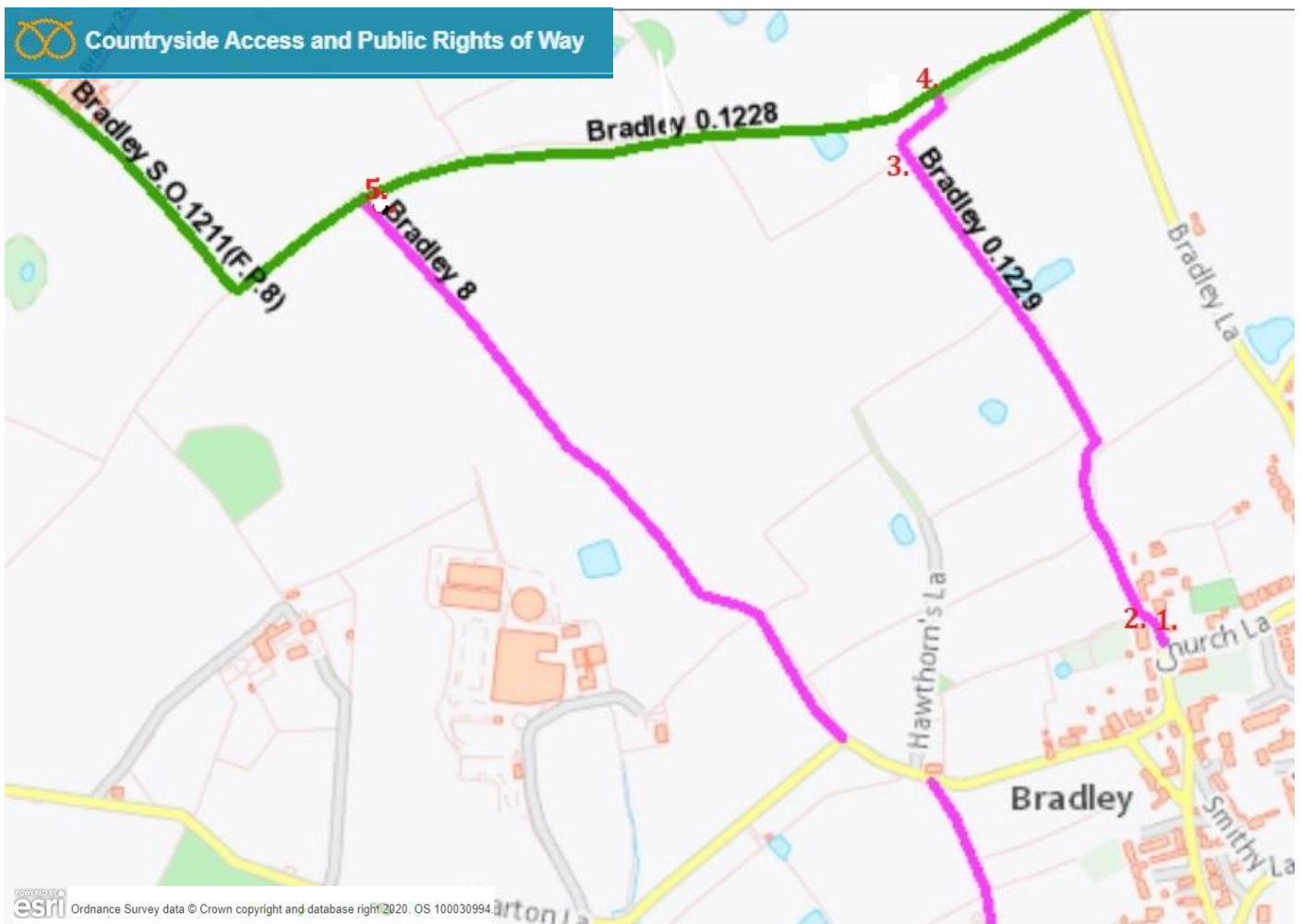
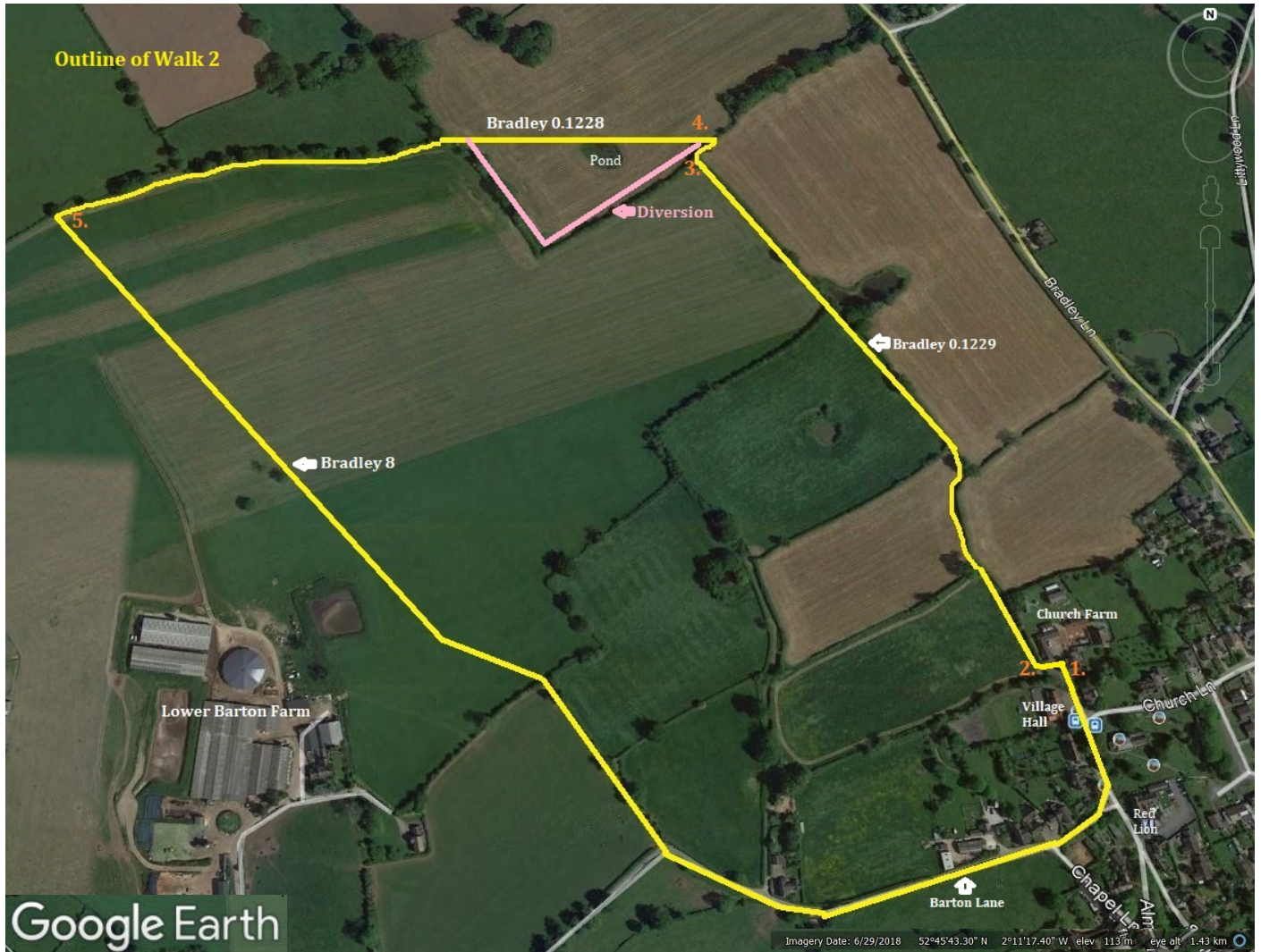


Walk 2

1. Staffs County Council map of area relating to this walk.



2. The relevant Google Earth image on which is superimposed the outline of this walk.



This walk is roughly 2 miles in length and takes approximately 45 minutes. Apart from an upward slope at the end of Barton Lane this walk is flat.

Note: Walkers should be aware of traffic down Barton Lane, which can be quite busy at times with cars and farm vehicles. It is also lies on a bus route.

This walk begins between Church Farm and the Village Hall by passing through the gateway which separates Church Farm from the Village Hall car park, as indicated by photograph no.1. The first stile is then on the immediate left, as shown in photograph no.2:

1.



2.



A word of warning to those walkers with shorter legs: this stile is a little higher than usual.

After crossing the stile, the walk turns right and proceeds along Bradley 0.1229. On the whole this path makes fairly easy walking. At the time of writing this account there were cattle in some of the fields along this path, but these were separated from the path by an electric fence. In those fields in which crops were planted there was adequate room left for walkers.

At the end of Bradley 0.1229 the path passes through a hedge to join up with Bradley 0.1228. However, the stile through which the walker must pass to reach Bradley 0.1228 is partly concealed as shown by photograph no.3 (below, taken on or about 26/07/20):



3.

Photograph no. 4 below (taken on or about 26/07/20), looks back to the stile after it has been crossed. There is no fingerpost to indicate the position of Bradley 0.1228.



4.

As may be seen from the Staffs County Council map provided for this walk, with the walker's back to the above stile, Bradley 0.1228 passes diagonally (to the left) over an open field. However, in preparation for the introduction of livestock, an electric fence has been placed around its perimeter. Consequently, in order to avoid interaction with the livestock, walkers should follow the diversion which lies around the perimeter of the field. It is marked in pink on the Google Earth image. This detour provides adequate space for walking between the electric fence and the hedge. Walkers then exit this field to join up with Bradley 0.1228 in the adjacent field. This path then continues on ahead with the hedge, which is punctuated by a row of trees, to the right. The last tree in this row displays a footpath sign, as shown in photograph no.5 (below, taken on or about 26/07/20):

5.



The walk now turns to the left to enter Bradley 8. Although the general direction of this path is indicated on the above tree, it lies across a field which has been grassed over. Consequently, there are no visible signs of it. The best advice is to proceed through this field keeping Lower Barton farm to the right until a stile comes into view ahead.

After the stile, this path continues on to join up with Barton Lane. It was found that the field adjacent to Barton Lane did contain cattle from time to time during the period covered by this account. Although no difficulties were encountered by their presence on the occasion that the walk took place, there was no barrier between the path and the animals.

On reaching Barton Lane turn left and follow the road up to the top. A left turn then brings the walk full circle back to the Village Hall.